

New Hydrologic Unit Designations for Watershed Codes

As of July 1, 2006, new four-digit Hydrologic Unit Codes must be used for all watershed designations. These designations are required on the Plan Identification Sheet in the nutrient management plans, as stated in **Section 4 VAC 5-15-140.B.3: County and watershed code of land under the nutrient management plan**. Also, acreage reported on the annual activity reports must be reported by watershed codes as required in **4 VAC 5-15-100.A.4: Acreage covered by plans and planned acreage by county and state watershed codes specified by plan categories of new or revised**. Following are instructions for accessing the website that hosts the maps that have the codes needed to comply with the new method.

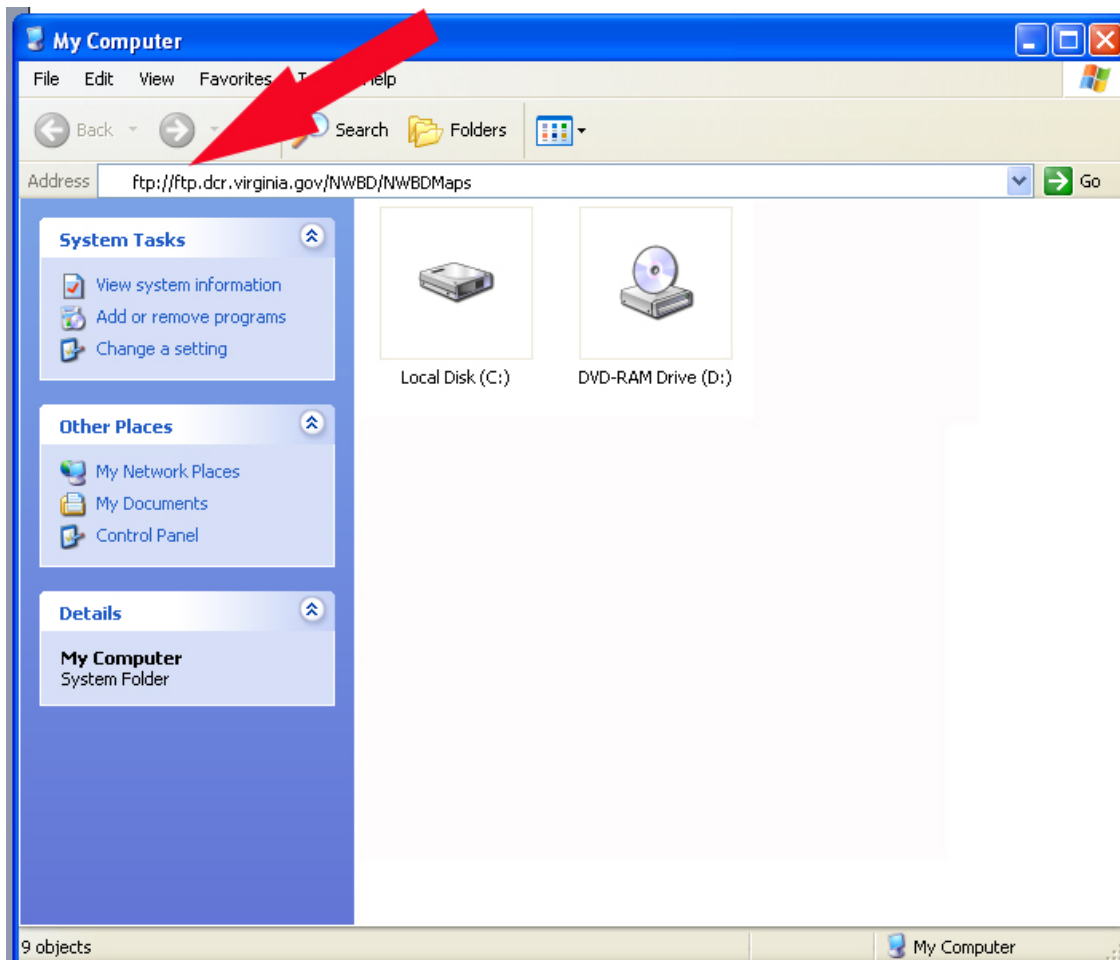
If you're using Internet Explorer 8, you must do this before getting started:

- A. Start Internet Explorer.
- B. Click *Tools* and then *Internet Options*.
- C. Select the *Advanced* tab.
- D. Under *Browsing*, click the box next to *Enable FTP folder view (outside of Internet Explorer)* to make sure it's checked. Now click the *OK* button.

1. **Highlight this link:** <ftp://ftp.dcr.virginia.gov/NWBD/NWBDMaps>, and copy it (right click on the highlighted area and choose “copy” from the menu)

2. Open the “**My Computer**” window from your computer’s desktop

3. Right click in the address bar at the top of the screen and choose “paste” from the menu. Press **enter**.



4. At the Log On prompt, enter username: **guest** and the password: **c0nserv**, then select **Log On**. Note that the **0** in the password is a zero.



5. Right-click on the filename for the county in which you are working.

6. Select *Copy to Folder* and choose the directory in which you want to save the file.

Once you have saved the counties' files you need, close the file. Go to the directory in which you saved the map files and open one of the files. These are *PDF* files, so you need to use *Adobe Reader* to open them.

A map of the county with the four-digit (2 letters+2 numbers) hydrologic codes will come up. If it appears too small, click the *Maximize* button.

Once you have the map open, click on the *Zoom in Tool* (the small magnifier) on the tool bar, bring the cursor down on the map, hold down the left mouse button and outline the area of interest by dragging to the opposite corner of the rectangle drawn by moving the cursor over the map. Release the button, and that rectangular area will be enlarged. Use the scroll bars at the side and bottom to pan across and up and down until you find the code for the area you are working in. The red lines on the map mark the hydrologic unit boundaries.

If you are unable to access this information contact Dave Kindig at (804) 371-8095 for a CD of the county map(s) you need at david.kindig@dcr.virginia.gov. A full explanation of the new Hydrologic Unit boundaries of the Virginia portion of the National Watershed Boundary Dataset (NWBD) can be found on DCR's wsite.